

XVII. STAR RALLY

BARUM RALLY ZLÍN HISTORIC 2025



15. – 17. 8. 2025

CZECH HISTORIC CHAMPIONSHIP RALLY | RALLY LEGEND DEMONSTRATION DRIVE

BARUM CZECH RALLY ZLÍN
15. – 17. 8. 2025 www.CzechRally.com

#VisitCzechia

SUPPLEMENTARY REGULATIONS

PREVIOUS WINNERS STAR RALLY HISTORIC

2024:	Jaroslav Vančík – Jan Tománek	CZE	BMW M3
2023:	Jiří Hanák – Michal Večerka	CZE	BMW M3
2022:	Jaroslav Vančík – Jan Tománek	CZE	BMW M3
2021:	Vlastimil Neumann – Martin Hlavatý	CZE	Ford Escort RS Cosworth
2019:	Vlastimil Neumann – Martin Hlavatý	CZE	Ford Escort RS Cosworth
2018:	Vlastimil Neumann – Otto Slezák	CZE	Ford Escort RS Cosworth
2017:	Stanislav Budil – Petr Vejvoda	CZE	BMW 2002 TI
2016:	Lubomír Tenkl – Jaroslav Vosádka	CZE	BMW M3
2015:	Paul Chieusse – Patrick Chiappe	FRA	Renault 5 Turbo
2014:	Paul Chieusse – Patrick Chiappe	FRA	Renault 5 Turbo
2013:	Jaroslav Vančík – Jiří Vajdák	CZE	Lada VFTS
2012:	Jaroslav Vančík – Kateřina Trojanová	CZE	Lada VFTS
2011:	Jozef Béreš sen. – Csaba Gál	SVK/HUN	Audi Quattro A2
2010:	Milan Blahout – Tomáš Angreška	CZE	VAZ 21074
2009:	Aleš Máčala – Michal Pohanka	CZE	Alfa Romeo Giulietta
2008:	Michal Sum – Michal Růžička	CZE	Škoda 130 RS

SUPPLEMENTARY REGULATIONS

17th STAR RALLY HISTORIC 2025

15 – 17 August 2025

Autoclub Czech Rally Championship of Historic Cars
International Rally for Historic Cars
Rally Legend Demonstration drive

(TRANSLATION)

TABLE OF CONTENTS		page
1.	Introduction	2
2.	Organization	2
3.	Programme	3
4.	Entries	4
5.	Insurance	6
6.	Advertising and Identification	6
7.	Tyres	7
8.	Fuel	7
9.	Reconnaissance	7
10.	Administrative Checks	8
11.	Scrutineering, Marking and Sealing	8
12.	Other procedures	9
13.	Identification of Officials	11
14.	Classification and Prizes	11
15.	Final Checks	12
Appendix 1	Itinerary	13
Appendix 2	Reconnaissance schedule	15
Appendix 3	CROs – names, photographs and duties schedule	17
Appendix 4	Competition numbers and advertising	16
Appendix 5	Monitoring GPS System ONI	18

PREAMBLE

Historic sporting car is such vehicle which complies with one of categories specified in FIA Sporting Regulations (App. K) or National Sporting Regulations ACCR. In technical matter the vehicle must comply with AIACR, FIA Regulations or Appendix J of appropriate period. These regulations are designed to allow competing with cars of that-time specification and to prevent to increase their engine power or general performance with today's modern technologies.

Historic races are not only another set of events where competitors can get some trophies. It is an independent discipline where sport joins the deepest respect to these vehicles and their history. It is an active celebration of automobile tradition.

These regulations are valid for all vehicles, no matter if they are originals or newly built cars according to the original specification which is in comply with international regulations for each period.

The only variations allowed against the original period specifications are those mentioned in the App. K or the National regulations.

1. INTRODUCTION

1.1 General

This rally will be run in compliance with the ACCR National Sporting Regulations, which comply with the FIA regulations, and these supplementary regulations. The Czech version shall be decisive in case of differences.

Modifications, amendments and/or changes to these Supplementary Regulations will be announced only by numbered and dated Bulletins (issued by the organiser or the Stewards).

1.2 Surface

99% asphalt, 1% various surface

1.3 Overall SS distance and total distance of the itinerary

- Total distance of the SS: 151.55 km (88.48 km for Rally legend – only Leg 1)
- Total distance of the rally: 562.47 km (300.08 km for Rally legend – only Leg 1)

2. ORGANISATION

2.1 Eligibility

Czech Rally Championship of Historic Cars

Free International Rally for Historic Cars

Rally legend demonstration drive

2.2 VISA numbers

ASN visa No.: **012AR250701**

2.3 Organiser's name, address and contact details

Auto klub Barum Zlín v AČR

Hornomlýnská 3715, 760 01 Zlín

Czech Republic

Tel.: +420 577 210 677, +420 577 432 004, +420 577 437 024

Fax: +420 577 210 907

E-mail: info@czechrally.com

Web: www.starrally.cz

2.4 Organising Committee:

Chairman: Mr. Miloslav Regner

Members: Mr. Zdeněk Bělák, Mr. Antonín Smažinka

2.5 Stewards of the Meeting:

Chairman

Stewards

Mr. Jiří Nejdí

Mr. Luděk Kopecký

Mr. Martin Venuš

Mr. Jiří Venuš

Stewards' Secretary

2.6 FIA Delegates & Observer:

ASN Safety Delegate

ASN Media Delegate

Mr. Miroslav Smolík

Mr. Karel Louda

2.7 Senior officials

Clerk of the Course

Deputies CoC

Mr. Zdeněk Bělák

Mr. Miloslav Regner

Mr. Antonín Smažinka

Secretary of the Rally

Chief Scrutineer

Chief Timekeeper

Mr. Květoslav Malota

Mr. Václav Šedivý

Mrs. Hana Hlobilová

Chief Medical Officer
 Assistant of the Chief Medical Officer
 Competitors' Relations Officers
 Chief Safety Officer
 Press Relations Officer
 Chief of Service Park
 GPS system
 Results processing

MUDr. Lubomír Nečas
 MUDr. Tomáš Novotný
 Mrs. Petra Mynářová
 Mr. Květoslav Malota
 Mr. Roman Ordelt
 Mr. Ondřej Krhánek
 Mr. Martin Vávra, SAS Zlín, NAM system s.r.o.
 Mr. Oto Berka

2.8 HQ Location

Place: Zlín, Autoklub Barum, Hornomlýnská 3715, Zlín (GPS 49°13.752'N, 17°40.478'E)
 Date: 13 August 2025 Time: 7:00-18:00
 14 August 2025 7:00-18:00
 Place: Regional Authority, třída T. Bati 21, 761 90 Zlín (Building 21)
 (GPS 49°13.389'N, 17°39.506'E)
 Date: 15 August 2025 Time: 7:00-24:00
 16 August 2025 7:00-23:00
 17 August 2025 7:00-20:00

Location of Official Notice Board

The official notice board will be only electronic and available at www.czechrally.com. Competitors can also use the Sportity mobile application. Password for the Star Rally Historic is **Star2025**.

2.9 Location of Parc Fermé

Place: Zlín, Pod Velkým kinem (*not for Legend drive*)
 Date: 15 August 2025 arrival from Obchodní dům
 16 August 2025 arrival from Hotel Zlín
 17 August 2025 arrival from Hotel Zlín

2.10 Location of the Press Centre

Place: Vestibul AB Continental Barum, Otrokovice
 Date: 14 August 2025 Time: 14:00-23:00
 15 August 2025 7:00-24:00
 16 August 2025 8:00-23:00
 17 August 2025 8:00-22:00

2.11 Location and organisation of Service Parks

Place: Zlín, Dvacátá street (parking Cream)
 (GPS 49°13.48557'N, 17°39.48410'E)
 Date: From 14 August 2025 (7:00) to 17 August 2025 (22:00)

3. PROGRAMME

Monday, 28 July

24:00	Closing date for entries	AK Barum
24:00	Closing date for additional space and other requests for the Service park	AK Barum

Monday, 4 August

18:00	Publication of the List of Entries	AK Barum, rally website, DNB
21:00	Issuing of the road book and maps	rally website

Wednesday, 13 August

10:00 – 14:00	Recommended optional administrative check, distribution of the Road Book and reconnaissance GPS units	Rally HQ, Building 21 – 1 st floor
16:00 – 19:00		
12:00 – 18:00	Reconnaissance (not for Legend)	See Art. 9

Thursday, 14 August

07:00 – 24:00	Reconnaissance	See Art. 9
07:00 – 09:00	Optional administrative check, distribution of the Road Book and reconnaissance GPS units	Rally HQ, Building 21 – 1 st floor
07:00	Opening of Service Park	Zlín, Dvacátá str., parking Cream
19:00 – 20:00	Autograph session of selected drivers	Shopping centre Golden Apple
24:00 – 01:00	Returning reconnaissance GPS units in Stop of SSS1 Zlín	Zlín, Zarámí street

Friday, 15 August

07:00 – 10:00	Administrative check	Zlín, parking Gahurova
07:30 – 11:00	Distribution of rally GPS units, scrutineering	Zlín, parking Gahurova
12:00	1 st Stewards Meeting	Rally HQ, Building 21
13:00	Publication of Starting lists for ceremonial start and Leg 1	DNB
14:00	Ceremonial start of the rally	Zlín, náměstí Míru square
18:57	Start of Leg 1 (Section 1) - TC 1	Zlín, Vodní street
19:30	Finish of Leg 1 (Section1) TC 1A	Zlín, next to Velké kino

Saturday, 16 August

10:35	Start of Leg 1 (Section 2) - TC 1B	Zlín, next to Velké kino
20:20	Finish of Rally Legend demonstration drive	Zlín, náměstí Míru square
20:35	Finish of Leg 1	Zlín, next to Velké kino
21:30	Publication of Starting lists for ceremonial start and Leg 2	DNB

Sunday, 17 August

06:00	Re-scrutineering of cars retired during Leg 1	Zlín, next to Velké kino
06:32	Start of Leg 2	Zlín, next to Velké kino
(14:00)	Prize-giving ceremony	Zlín, náměstí Míru square
	Finish of the rally (last TC – Parc Fermé)	Zlín, next to Velké kino
14:30	Final checks	Samohýl Motor Zlín, a.s.
16:00	Posting of the provisional final classification	DNB

4. ENTRIES
4.1 Closing date for entries

Closing date for entries: 28 July 2025 at 24:00

4.2 Entry procedure

4.2.1 Entry may be done only via electronic entry form at www.czechrally.com. The entry date in the system and date of incoming entry fee payment to the organizer's account are decisive. E-mail contact regarding the entries and other service requests is entry@czechrally.com.

Details concerning the co-driver can be specified up to the start of administrative checks. Foreign competitors are obliged to attach the approval of their ASN (Art. 2.3.8. FIA ISC)

4.2.2 The entry will be accepted only after organizer receives the entry fee payment before the closing date of entries. In exceptional cases organizer can accept the entry even before receiving the entry fee. Payment after the closing date can be accepted only after previous agreement with the organizer and means automatically increase of the fee by 25%. In such case the competitor is obliged to proceed the payment before picking up the road book.

4.2.3 The entry will be confirmed by email from the organizer.

4.3 Number of accepted entrants and classes

4.3.1 The number of entrants is limited by 85 cars. The Organizer reserves its right to choose and accept entries at his discretion and can refuse the entry without giving a reason. Priority at accepting will be given to crews entered to rally of historic cars.

4.3.2 For participation in rally of historic cars the App. K of the FIA Sporting Regulations or Chapters E and K of National Sporting Regulations ACCR will be followed.

Permitted cars:

Category 1 – epoch „69“ Road legal cars built between 1/1/1931 and 31/12/1957 and Touring and GT cars, models homologated between 1/1/1958 and 31/12/1969	1A	up to 1300 ccm
	1B	over 1300 ccm up to 1600 ccm
	1C	over 1600 ccm
Category 2 – epoch „75“ Touring (T), Competition Touring (CT), Grand Touring (GT) and Competition Grand Touring (GTS) cars of Groups 1, 2, 3 and 4, models homologated between 1/1/1970 and 31/12/1975	2A	up to 1300 ccm
	2B	over 1300 ccm up to 2000 ccm
	2C	over 2000 ccm
Category 3 – epoch „81“ Touring (T), Competition Touring (CT), Grand Touring (GT) and Competition Grand Touring (GTS) cars of Groups 1, 2, 3 and 4, models homologated between 1/1/1976 and 31/12/1981	3A	up to 1300 ccm
	3B	over 1300 ccm up to 2000 ccm
	3C	over 2000 ccm
Category 4 – epoch „92“ Touring (T), Competition Touring (CT), Grand Touring (GT) and Competition Grand Touring (GTS) cars of Groups A, B and N, models homologated between 1/1/1982 and 31/12/1987 (Period J1) and models homologated between 1/1/1988 and 31/12/1992 (Period J2)	J1Aa	2WD up to 1300 ccm
	J1Ab	2WD up to 1600 ccm
	J1B	2WD up to 2000 ccm
	J1C	2WD over 2000 ccm
	J1D	4WD
	J2Aa	2WD up to 1300 ccm
	J2Ab	2WD up to 1600 ccm
	J2B	2WD up to 2000 ccm
	J2C	2WD over 2000 ccm

	J2D	4WD
Category 5 – epoch „2000“ a) Touring cars (T) and modified touring (TC) classified in groups N and A, approved from 1.1.1993 to 31.12.2000 (period K), from 1.1.1995 to 31.12.2000 period KC - Kit Car), from 1.1.1993 to 31.12.1996 (K1 period), from 1.1.1993 to 31.12.2000 (K2 period), from 1.1.1997 to 31.12.2000 (KRC period - WRC) with FIA HTP issued; b) Touring cars (T) and modified touring cars and cars GT in groups N and A, homologated from 1.1.1986 to 31.12.1996 (with max. range of modification according to Art. J 1996 and using NTP for Category 5 – epoch "96")	5A	Group N up to 1600 ccm
	5B	Group N over 1600 ccm up to 2000 ccm
	5C	Group N over 2000 ccm
	5D	Group A up to 1300 ccm
	5E	Group A over 1300 ccm up to 2000 ccm
	5F	Group A over 2000 ccm

Notes:

- Restrictors – see art. 3.2.4.1 and 3.2.4.2, chapter K National Sporting Regulations.
- In rally of historic cars the vehicles have to correspond in all aspects to their homologation papers. Any tuning modifications or changes, which aren't approved by the homologation, are forbidden!
- Cars of the Category 5, chap. B) which are built according to the National technical regulations, can be entered among the historic cars only in 2025. In 2026, only vehicles according to the chap. A) will be classified.

4.3.3 For participation in rally Legend Demonstration Drive Art. 7, Chap. K, National Sporting Regulations ACCR will be followed.

Permitted cars:

Rally Legend Demonstration Drive can be entered with historic rally cars, their replicas or cars according to the National Sporting Regulations homologated no later than on 31 December 1996. The appearance of the car has to correspond fully with the contemporary original and to act as a representative of the history of motorsport (vehicle of this type has had to be classified on rally type event in the past). Only the originals of the cars produced after 1.1.1991 are allowed to take part. Vehicles registered in the Czech Republic must have Sporting Technical Passport.

4.4 Licenses

4.4.1 Rally of historic cars can be entered by competitors, drivers and co-drivers with valid international or national license for automobile sport. Vehicles of classes 3C, J1C, J1D, J2D, 5C and 5F can be driven only by drivers who are not on the ACCR beginners' list. Vehicles of classes 5C and 5F can be driven only by drivers with international license, type "ITC".

4.4.2 Rally Legend Demonstration Drive can be entered by drivers and co-drivers with valid driving license and any ACCR sporting license, at least the temporary one-day license. Temporary one-day license can be issued also to foreign drivers, if they do not own any license.

4.5 Entry fee

- Star Rally Historic 2025

Without Organizer's compulsory advertising

- 880 EUR (incl. insurance)

- 1760 EUR (incl. insurance)

- Star Rally Legend 2025

Without Organizer's compulsory advertising

- 420 EUR (incl. insurance)

- 840 EUR (incl. insurance)

4.6 Payment

Money shall be transferred by post-office money order or by bank transfer to:

Bank: Česká spořitelna, a.s. Zlín

Account holder: Autoklub Barum Zlín v AČR

Account No.: 1400353379/0800

IBAN: CZ7308000000001400353379

Variable symbol.: generated in is.autoklub.cz

Swift: GIBACZPX

4.7 Refunds

Entry fees will be fully refunded:

- to candidates whose entry has not been accepted
- in the case of the rally not taking place.

The organisers may partially refund the entry fee to those entrants who, for reasons of „force majeure“, were unable to start in the rally and excused themselves before the start of the administrative checks. The crews who do not excuse themselves will be announced to ASN and the entry fee will not be reimbursed.

5. INSURANCE

5.1 Insurance Coverage for the Organizer

5.1.1 The Czech Autoclub (ACCR) has made the insurance contract with s Allianz pojišťovna a.s. through the PLATINUM Consulting s. r.o. company, a framework agreement No. C550012623 about organizer's liability insurance covering damage caused to the third party during the competition up to 50 000 000 CZK per incident.

5.1.2 The part of the insurance agreement is the coverage for competitors against the damages caused to third parties up to 50 000 000 CZK per participant. However the damage caused by drivers among themselves is not covered by this contract. The organizer binds self to arrange this insurance contract for all competitors except those, who will document the liability insurance covering damages caused on closed route.

5.1.3 The insurance for organizers and participants is made with an integral excess of 5 000 CZK. It means that damage up to 5 000 CZK won't be refunded and damage over 5 000 CZK will be covered without the complicity of insured.

5.1.4 All crews at administrative check have to hand in the valid International Green Card for their car. Without this card the crew won't be permitted to start.

5.2 Insurance Coverage for the competitors and crews

All the drivers and co-drivers are obliged to arrange their own accident insurance. The proof should be documented on request at administrative check. The insurance of foreign crews have to cover the costs of possible medical treatment in the Czech Republic.

5.3 Damage Reporting

The crews are obliged to notify the organizer about the damage caused on the track by their car by the end of event the latest. Violation of this duty stands for summoning the competitor and involved crew to a disciplinary committee.

5.4 Insurance Coverage Exclusions

Auxiliary vehicles, cars dedicated to reconnaissance rides and vehicles with special labels issued by the organiser are not covered by the provided rally insurance (with the exception of insured organiser's cars) and those are always going on their own responsibility.

6. ADVERTISING AND IDENTIFICATION

6.1 Compulsory advertising

- starting numbers: Zlín, Orlen, ACCR, Zlínský kraj, VisitCzechia
- rear fenders: ONI system
- front bonnet: logo of the rally

Placement of numbers and adverts provided by the Organizer is specified in Appendix 3 SR.

6.2 Loss or removal of advertising

If there is ascertained at any point during the rally that an advertising plate (or any other type of advertisement) supplied by the organiser is missing from a car then the crew shall be penalised with a fine of 400 € for each missing advertisement or if the advertisement is modified or not placed according to the Appendix 3 SR.

6.3 Competition numbers and nameplates

Competition numbers and will be supplied by the Organiser. Black numbers will be placed on white rectangle area (width 50 cm, height 44 cm, where area 50x30 cm is reserved for black number with height of 26 cm and remaining area 50x14cm or 2 areas 50x7cm for compulsory organiser's advertising). Letter H or L with half height of the number is an inseparable part of the starting number. Competition numbers have to be placed on the front door. Driver's and co-driver's national flag and nameplates must be placed on the rear side windows (design according to the FIA RRR) or on the front fender (min. height of the letters and flag 4 cm, letter-colour contrasting to the bas color).

Numbers and nameplates have to be on the car during the whole rally. If it is ascertained at any time during the rally that:

- a competition number or one rally plate is missing, this will be penalised by 100 €.
- both competition numbers or both rally plates are missing; this will be reported to the Stewards.

Examples of placing the competition numbers and nameplates are mentioned in Appendix 3 SR.

7. TYRES

At all times during the event in the Czech Republic, the tread depth of the tyres fitted on the car, must not be less than 1.6 mm. There must be used only tyres with EU, DOT or FIA homologation, which are in conformity with Art. 3.7.4, Chap. K, National Sporting Regulations ACCR. Tyre tread hand cutting is permitted.

8. FUEL, REFUELLING

8.1 Fuel

Unleaded fuel with a maximum lead content of 0,013 g/l is permitted.

8.2 Refuelling

Crews may refuel only in the designated refuelling zones (and remote refuelling zones) specified in the itinerary and in the road book. Staff in the refuelling zone has to be equipped with protective overalls and shoes according to Art. 61.2.3 National Sporting Regulations ACCR.

Fuel stations on the route of the rally with permitted re-fuelling:

- Valatrans Liptál (MOL 100) (GPS: 49° 17.630'N, 17° 56.120'E)
- Orlen, Kroměříž – Kotojedy 58 (Verva 100) (GPS: 49° 16.662'N, 17° 24.078'E)

9. RECONNAISSANCE

9.1 Reconnaissance registration

Before the beginning of reconnaissance each crew announces a factory make and a registration plate number of its reconnaissance car and receives the reconnaissance GPS unit. This GPS unit must be placed in the car during the whole reconnaissance including the road sections. The crew receives identification for its car (starting number) and a reconnaissance time card. Starting number must be affixed in right upper part of the windscreen during reconnaissance at all the times. Any change of the car must be announced to the organiser in time. **Reconnaissance time cards and reconnaissance GPS units will be returned to the organizer at the scrutineering.** Times for the reconnaissance at SS1 – SSS Zlín will be given to the competitors at Administrative checks. Crews can't enter the start area of SS1 – SSS Zlín earlier than 20 minutes before their scheduled time. Early arrival to the start reconnaissance at SS1 – SSS Zlín will be penalised by the Clerk of the Course by 200 €.

9.2 Reconnaissance schedule

Wednesday 13 August 2025

SS	Place	Stage length (km)	(from-to)
9	Podhoran	20.61	13:00 18:00
7/10	Kateřinice	12.62	12:00 17:00

Thursday 14 August 2025

3/6	Halenkovice	17.67	08:00 16:00
4	Bunč	18.11	08:00 16:00
2/5	Březová	12.73	11:00 19:00
8	Pindula	17.22	11:00 19:00
1	SSS Zlín	9.57	24:00 01:00

9.3 Reconnaissance rules

The crews are obliged to follow all reconnaissance rules specified National Sporting Regulations 2024 and these supplementary regulations.

9.3.1 Reconnaissance will be organised in compliance with art. 35 of the FIA Regional regulations and only insured series production cars conforming to art. 35.1 of FIA Regional regulations must be performed.

9.3.2 Any presence of driver or co-driver on the route of special stages during the period of three months prior to the start of the rally shall be regarded as performed reconnaissance. Drivers, who for whatever reason enter the area used for the Barum Czech Rally Zlín during that period, must promptly inform the Chairman of the Organisation Committee (M. Regner, tel.: +420 577 432 004), excluding drivers living or working in that area. These restrictions apply to all who wish to attend the rally regardless of whether they already sent the entry form or received the supplementary regulations.

9.3.3 Reconnaissance is restricted in **3 passes in the same special stage**. On the SS 1 - SSS Zlín only 1 passage (3 laps) is allowed. Crews are forbidden to drive in the opposite direction to that of the special stages, except for route areas specified in the reconnaissance road book. In start starts and stop controls crews will make the entries to the reconnaissance time cards by themselves. Reconnaissance drives will be checked via monitoring GPS units.

9.3.4 The progress of the reconnaissance will be monitored by the Czech Police and other rally officials. The maximum speed limitations during reconnaissance follow the Czech traffic regulations. Breaking the rules and mainly exceeding the speed limits will be controlled and fined by the Czech Police according to standard procedures.

9.3.5 Illegal reconnaissance performed out of the Time Schedule (Art. 9.2 SR) or performing more passages than permitted will be reported to the stewards.

Competitors, who fail to follow other reconnaissance rules, will be penalised as follows:

1 st infringement	200 €
2 nd infringement	5 min. penalty
3 rd infringement	Report to the Stewards

Speeding will be penalised according to the Art. 34 National Rally Regulations by 10 € per each km/h over the limit.

9.3.6 Any testing from Wednesday 13 August 2025 in Zlín region (Zlínský kraj) is prohibited for Star Rally Historic entrants.

10. ADMINISTRATIVE CHECKS

It is strongly recommended to perform the whole administrative check already during the presence and materials' collection. To avoid longer stay of crew in the premises of the rally secretariat competitors are obliged to send all required documents in advance via e-mail.

Place: Zlín, parking Gahurova

Date: 15 August 2025 *Time:* 7:00 - 10:00

Crews are obliged to perform the Administrative checks prior to their schedule time of Scrutineering or during the materials' collection.

Documents to be sent electronically:

- Valid driving licences
- Competitor's and drivers' sporting licences
- Car insurance cover certificate and car insurance registration papers
- First page of the Historic Technical Passport of the vehicle
- ASN authorisation (mandatory for foreign competitors)

Documents to be checked for rally of historic cars:

- Competitor's and drivers' sporting licences
- Valid driving licences

Documents to be checked for rally legend demonstration drive:

- *Valid driving licences*
- *At least daily sporting license (Daily licence can be issued on the place. If the applicant will not have a personal accident insurance, it can be managed by the organizers on the place for 10 €.)*
- *Car insurance cover certificate and car **insurance registration papers***
- *Vehicle registration card*

11. SCRUTINEERING, MARKING AND SEALING

11.1 Scrutineering

Place: Zlín, parking Gahurova

Date: 15 August 2025 *Time:* 7:30 - 11:00

The time for scrutineering will be issued as a Bulletin of the CoC at the official Notice Board. Any delay or early arrival at scrutineering will be penalised by 30 € for each 5 minutes delayed. If the delay exceeds 30 min the crew will be reported to the Stewards. Competitors entering the rally of historic cars are obliged to present the homologation papers and HTP passport.

11.1.1 Mandatory documents for Scrutineering:

- Homologation list of the car, Sporting Passport of the car
- SOS/OK label (A3 size)
- Filled technical card including details of crew's safety equipment and confirmation of passing the administrative check.
- Other documents required by the technical regulations

During the scrutineering there will be check the functionality of the monitoring GPS system. Crews which don't have a permanent installation of this system in their cars, will pick up the temporary installation kit one hour prior to their scrutineering time in order to have sufficient time to install the kit into their cars.

11.2 Scrutineering procedure

11.2.1 Scrutineer will check the vehicle, if it's in conformity with national road traffic laws including the noise measurement and additional lights and racing tyres usage. The competitor is obliged to show valid registration card.

11.2.2 Scrutineer will check the safety equipment of the crew and the car (fire extinguisher, warning triangle, overalls, helmets). The presence of sticker with safety phone number will be checked. Crews

are obliged to hand over filled forms with safety equipment for both driver and co-driver (not mandatory for Rally Legend).

11.2.3 Cars entering the Rally legend demonstration drive will be checked in terms of matching the original version. Replica cars will be compared to its original historical model.

11.3 Car lighting

In liaison road sections between special stages, it is possible to use car lighting only through the original fitted and auxiliary headlamps with EHK ("E") homologation. Headlamps without homologation cannot be used during connection road sections. Complying with this provision will be checked by judges of fact. Any infringement will be reported to the Stewards who may impose sanctions complying art. 152 and 153 of the FIA International Sporting Code. Using LED lights on historic cars (including Rally Legend) is forbidden.

11.4 Obligatory GPS monitoring device

11.4.1 The GPS tracking system will be rented to the competitors for **non-reversible fee 22 €**. Eventual destruction, non-return or damage of the unit has to be paid for by the competitor to the provider in accordance with the approved price list. All further details will be given during presentation to each crew and in Appendix 5 SR.

11.4.2 All cars entered to the Star Rally Historic have to be equipped with obligatory monitoring GPS device already before the scrutineering.

11.4.3 Competitors will receive the GPS components (power cable and magnetic antenna) during Distribution of the Road Book. They are obliged to install the components to the vehicle according to the installation manual already before the scrutineering (incl. Rally Legends).

11.4.4 Competitors are obliged to prepare a 12V output for connecting the GPS unit prior to the scrutineering (incl. Rally Legends).

11.4.5 Competition cars not equipped with the monitoring device GPS will not be allowed to start.

11.4.6 Any attempt to tamper with, to manipulate or to interfere with the tracking device fitted to the competition car or any device that fails to record a trace due to external interference will be reported to the Stewards who may impose a penalty up to exclusion.

11.4.7 GPS units and brackets will be collected from the competitors by the provider in the finish time control (TC 6A – Rally Legends and 10E – Historic rally). In case of early retirement the GPS will be given to the provider in the Service Park.

11.4.7 Operating the GPS unit during the special stage is described in Appendix 5 SR.

12. OTHER PROCEDURES

12.1 Start procedure and order

12.1.1 Start of the rally

On the official notice board (in given times according to Art. 3 SR) there will be published starting order for:

Ceremonial Start		Reversed starting order in 1 minute interval.
Start for Section 1 of Leg 1	TC 1	Normal starting order in 1 minute interval.
Start for Section 2 of Leg 1	TC 1B	Normal starting order in 1 minute interval.
Start for Leg 2	TC 6D	Normal starting order in 1 minute interval.

The starting order will be set according to expected performance of particular crews. *Crews entered in the Rally Legend Demonstration Drive will start in one common group after the historic rally.*

Time cards will be collected and changed during the rally in TC 1A, 4A, 6C, 7A, 9A, 10C and 10E.

12.1.2 Ceremonial start

All starting crews must attend the Ceremonial Start at their due time wearing overalls and with their competition car. Crews can enter the start area at maximum 20 minutes before their start time. If any crew is unable to participate in the Ceremonial Start because of technical problems with their car, they will be permitted to start into the Leg 1 at TC 1 in its allocated start time on condition of notification to the stewards and passing the obligatory re-scrutineering checks. The concerned crew must attend the ceremonial start at their due time anyway. Wearing overalls is not necessary.

12.1.3 Start of special stages

The start to other special stages will be given by an electronic digital countdown system, counting down by seconds and clearly visible to the crew from the start position and coupled to a start line detecting early start. This start line detection device is placed 50 cm after the start line in the height of 50 (+/- 5) cm. The car must be placed in such way that its front part is on the level of the start line.

Timekeeper gives the time card to the crew as late as in the minute of starting procedure.

Light signals combined with digital countdown system will be used:

- 40 sec. - red light switches on
- 30 sec. - the starter shows on the starting countdown system,
- 10 sec. - red light blinks on,

- 5 sec. - yellow light switches on,
- 0 sec. - START, green light switches on,
- 20 sec. - green light switches off, red light switches on, the Art. 31.4.3 of the FIA Regional regulations will be applied.

12.1.4 Restart after retirement

A crew competing in Rally Legend Demonstration Drive which fails to finish any section of the rally will be permitted to restart the next section under condition of informing the Organizer.

12.2 Finish procedure

The competition part of the rally ends in the Time Control before the Finish ramp (TC 10E). Then the prize giving will be performed (Art. 14.2 SR). After leaving the finish ramp the crews are obliged to go directly to the Parc Fermé.

12.3 Permitted early check-in

Early arrival without penalty is permitted only at TC 1A (parc fermé after SSS 1), TC 6C (parc fermé after Leg 1), TC 10C (Bartošova street), TC 10D (Náměstí Míru square) and TC 10E (parc fermé).

12.4 Semi-circuit special stages

12.4.1 SS 1 SSS Zlín (15 August 2025 at 19:00)

The crews will start from the highest to the lowest starting numbers according to the Starting list posted on the official notice board. Parc Fermé before the start at TC 1 will not be organised.

Start of the Spectators' Super Special Stage will be flying, it means the crew starts to the special stage on green signal light (or other wave given by the start marshal) and the exact flying starting time will be recorded by the start detection device placed 1m behind the start line. The photocell for measuring the finish time will be placed in the circuit part, exact location will be specified in the road book.

If the start will be done in expected starting interval (approx. 1 minute), timekeeper will show a board with number 5 approx. 5 seconds before green light appears on a semaphore. In case of longer delay than expected, timekeeper will show the board with a sign STOP and then show again the board with number 5 approx. 5 seconds before green light appears on the semaphore.

Crews that will not finish SSS or retire during Section 1, crews which will do less than required number of laps or whose SSS time is worse than 12 minutes will receive an allocated SSS time of 12 minutes. The retired crews can restart into the Section 2 under the condition of Art. 46 FIA Regional regulations and that the car is placed to the Parc Fermé 1 hour before and re-scrutineered 1 hour before the scheduled Start of Leg 1, Section 2.

12.4.2 SS 2/5 - Březová (16 August 2025)

Start of the stage will be flying, it means the crew starts to the special stage on green signal light (or other wave given by the start marshal) and the exact flying starting time will be recorded by the start detection device placed 2-5 m behind the start line.

If the start will be done in expected starting interval (approx. 1 minute), timekeeper will show a board with number 5 approx. 5 seconds before green light appears on a semaphore. In case of longer delay than expected, timekeeper will show the board with a sign STOP and then show again the board with number 5 approx. 5 seconds before green light appears on the semaphore.

Crews, that will not finish stage 2/5, or which do less number of laps or whose SSS time is worse than 14 minutes, will receive an allocated time of 14 minutes. Crews, which will do higher number of laps, will get the real counted time. Laps will be counted by the judges of fact.

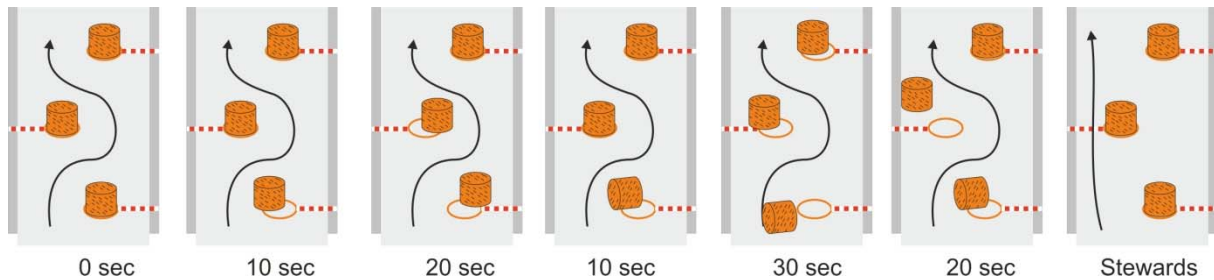
12.5 Special procedures

12.5.1 Barriers

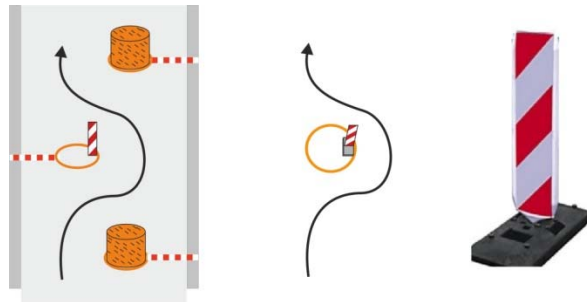
Due to safety reasons, barriers will be positioned on the rally route. Barriers will be counted by the judges of fact. Their list will be published in Bulletin at the DNB. The barriers will be made from straw bales. Incorrect pass of the barrier will be noted in the judge's check list and reported to the Clerk of the Course, who may impose a penalty. Penalties are set as in the FIA RRSR for ERC.

Penalties:

- rolling or moving part part of the barrier out of its base or hen the car touches the barrier so much that organiser has to move the barrier back to its position: **10 sec. for each element report to the Stewards**
- missing the barrier



In case of damaged straw bale, a traffic sign will be used as a replacement.



12.5.2 Behaviour on the rally route – Rally Legend

Due to safety reasons it's forbidden to perform wherever on the rally route the "donut" spins.

Breaching this rule may lead to exclusion of the crew by the CoC. If crew arrives to the stage start with delay exceeding 10 minutes, it will not be allowed to enter the stage. For possible rejoin to the rally follow the Art. 12.1.4 SR.

12.5.3 Time measurement

- Times of crews entered in rally of historic cars will be measured in each special stage with accuracy of 1/10 sec. In case of equal times the year of car's produce written in the HTP will be decisive in favour of the older one.
- Times of crews entered in Rally Legend Demonstration Drive will not be measured. The aim of this demonstration drive is to show the historic car and not to race. **Crew, which will not follow the Supplementary regulations and rules of the demonstration drive, can be stopped at any checkpoint of the rally and excluded by the CoC and will be rejected to start in two following round of Rally Legend drives.**

12.6 Official time used during the rally

Official time throughout the entire rally can be reached on the phone 14112.

12.7 Service Park

Service area can be entered only with vehicles wearing "SERVICE" label and "Recce car". Each competitor will receive at crew's presentation and materials' collection two stickers "SERVICE", two "DRIVER" labels and four "MECHANIC" labels (three pcs for Rally Legend). Additional "SERVICE" can be purchased for 40 EUR. All these vehicles must be in its fullness parked only in the competitor's allocated area. Each crew accepted to the rally will be given an assigned space in the Service area:

- basic space 80 m² (8x10 m) for each competition car entered in Historic Rally
- basic space 64 m² (8x8 m) for each competition car entered in Rally Legend Demonstration Drive

Basic space can be extended on demand for 10 EUR/1 m² (further info in Art. 3.2 SR).

Competitors' requests to common service place for their cars must be sent by e-mail to

entry@czechrally.com.

12.7.1 Remote service areas

During the rally it is allowed to use remote service zones according to Art. 60.6 National Rally Regulations.

- These zones are specified in the itinerary and road book.
- These zones are included in the road sections (no special time controls)
- It is obligatory to use protection sheet under the car.
- Only tyres mounted on the rally car or carried in the rally car can be used.
- Refuelling is possible only in following refuelling zone or at commercial fuel station marked in the road book.

12.8 Shortening the track

The following is considered as shortening the track:

- Running round anti-cut element from the other side than along the SS road
- Intentionally shortening the track with all four wheels of the paved road
- For shortening the track, after suggestion from Clerk of the Course the crew can be penalised up to disqualification by the Stewards.

12.9 Entrance to the Regrouping area and Parc Fermé

12.9.1 Safety GPS tracking workers are allowed to enter the regrouping area and Parc Fermé in order to maintain or repair the GPS tracking systems installed in the rally cars. They have to be accompanied by scrutineer and the representative of the team (driver, co-driver and competitor).

12.9.2 TV Crews, which will be published by the CoC information, are allowed to enter the regrouping area and Parc Fermé in order to maintain the camera systems installed in the rally cars or to exchange the data recording media. They have to be accompanied by scrutineer and the representative of the team (driver, co-driver and competitor).

13. IDENTIFICATION OF OFFICIALS

Chief of SS	- red tabard
Chief of TC	- red tabard
Chief of RCP/ SP	- yellow tabard with radio-sign (flash)
Timekeeper	- yellow tabard or green armband with inscription "Časoměřič / Timekeeper"
Route Marshals	- orange tabard
CRO	- yellow tabard with inscription "Competitor's Relations Officer"

14. CLASSIFICATION AND PRIZES

14.1.1 Rally of historic cars classification

- General classification of rally of historic cars
- Classifications of particular groups and classes

14.1.2 Rally Legend Demonstration Drive classification will not be performed.

14.2 Prizes

Prizes will be given to the crews according to unofficial final results at Náměstí Míru square, in front of the town hall, immediately after arrival. The ownership of prizes will confirmed only after issuing the Official final classification.

Following prizes and souvenir trophies will be awarded for:

14.2.1 General classification XVII. Star Rally Historic of rally of historic cars:

1 st place	Cups + wreaths
2 nd place	Cups + wreaths
3 rd place	Cups + wreaths

14.2.2 In classifications of particular groups (only when no less than 3 cars were entered in such group, otherwise there will be awarded only 1st prize) cups for 1st – 3rd place will be awarded. In cas of lower number of participants only 1st place will be awarded.

14.2.3 In classifications of particular groups (only when no less than 5 cars were entered in such group, otherwise there will be awarded only 1st prize) cups for 1st – 3rd place will be awarded. In cas of lower number of participants only 1st place will be awarded.

15. FINAL CHECKS AND PROTESTS

15.1.1 Final scrutineering of selected vehicles

Place:	Samohýl Motor Zlín – Škoda service (Tř. Tomáše Bati 642, 763 02 Zlín)
Date:	17 August 2025
Time:	14:30

15.2 Amount of the protest

Defined:	(by ASN)	560 €
----------	----------	-------

15.3 Appeal fees

National	(to ASN)	1 100 €
----------	----------	---------



Zdeněk Bělák
Clerk of the Course
Star Rally Historic

Appendix 1

ITINERARY



LEG 1, Section 1 (Sunrise: 5:41, Sunset: 20:05)							Friday 15 August 2025
SS/RZ TC/ČK	Location Místo	SS distance RZ délka	Liaison dist. Trať bez RZ	Total dist. Spoj. úsek	Target time Jízdní doba	Av. Speed Prům. rychlost	First car due Čas 1. jezdce
	Ceremonial Start - Zlín (City square / náměstí Míru)						14:00
1	Start of Leg 1 - Zlín (Vodní)						18:57
1	SSS ZLÍN (3 laps)	9,57					19:00
1A	Parc Fermé - Zlín (Next HQ / pod Velkým kinem) (Early check-in permitted)		1,43	11,00	0:30	22,00	19:30

Section 1

LEG 1, Section 2-3 (Sunrise: 5:42, Sunset: 20:03)							Saturday 16 August 2025
SS/RZ TC/ČK	Location Místo	SS distance RZ délka	Liaison dist. Trať bez RZ	Total dist. Spoj. úsek	Target time Jízdní doba	Av. Speed Prům. rychlost	First car due Čas 1. jezdce
1B	Re-start Leg 1 / Zlín (Next HQ / pod Velkým kinem)						10:35
1C	Service in		0,85	0,85	0:10	5,10	10:45
	Service A (Zlín)	(9,57)	(2,28)	(11,85)	0:15		
1D	Service out						11:00
	Refueling Zone	(12,73)	(31,31)	(44,04)			
2	Nové Dvory		19,26	19,26	0:40	28,89	11:40
2	Březová 1	12,73					11:43
	Remote Refuel Zone Zlín	(35,78)	(100,41)	(136,19)	12,05 km after fly finish of SS Březová		
3	Halenkovice		42,14	54,87	1:15	43,90	12:58
3	Halenkovice 1	17,67					13:01
	Remote Service (Volitelný servis Napajedla) - 4,72 km after SS Halenkovice						
4	Salaš		26,74	44,41	1:30	29,61	14:31
4	Bunč 1	18,11					14:34
4A	Regrouping & Service in		43,58	61,69	1:30	41,13	16:04
	Regrouping & Service B (Zlín)	(48,51)	(131,72)	(180,23)	0:45	(minimum 0:30)	
4B	Service out						16:49
	Refueling Zone	(12,73)	(31,31)	(44,04)			
5	Nové Dvory		19,26	19,26	0:40	28,89	17:29
5	Březová 2	12,73					17:32
	Remote Refuel Zone Zlín	(17,67)	(48,49)	(66,16)	12,05 km after fly finish of SS Březová		
6	Halenkovice		42,14	54,87	1:15	43,90	18:47
6	Halenkovice 2	17,67					18:50
6A	Service in		18,40	36,07	0:50	43,28	19:40
	Service C (Zlín)	(30,4)	(79,8)	(110,2)	0:45		
6B	Service out						20:25
	Refueling Zone	(0,00)	(2,24)	(2,24)			
6C	Parc Fermé - Zlín (Next HQ / Pod Velkým Kinem) (Early check-in permitted)		1,17	1,17	0:10		20:35
6A	Prize Giving / Vyhlášení Only for Legends / jen pro Legendy (City square / náměstí Míru)		18,48	36,15	0:50	apx.	(20:20)

Section 2

Section 3

Leg 1 totals	88,48	214,97	303,45
---------------------	--------------	---------------	---------------

V1 - 09.06.2025

LEG 2, Section 4-6 (Sunrise: 5:43, Sunset: 20:01) Sunday 17 August 2025

SS/RZ TC/ČK	Location Místo	SS distance RZ délka	Liaison dist. Trať bez RZ	Total dist. Spoj. úsek	Target time Jízdní doba	Av. Speed Prům. rychlost	First car due Čas l. jezdce
6D	Start Leg 2 / Zlín (Next HQ / pod Velkým kinem)						6:32
6E	Service in		1,07	1,07	0:10	6,42	6:42
	Service D (Zlín)	(0)	(1,63)	(1,63)	0:15		
6F	Service out						6:57
	<i>Refueling Zone</i>	<i>(12,62)</i>	<i>(88,57)</i>	<i>(101,19)</i>			
7	Kateřinice		46,26	46,26	1:05	42,70	8:02
7	Kateřinice 1	12,62					8:05
7A	Regrouping & Service in		42,31	54,93	1:10	47,08	9:15
	Regrouping & Service E (Zlín)	(12,62)	(88,57)	(101,19)	0:20	(minimum 0:15)	
7B	Regrouping & Service out						9:35
	<i>Refueling Zone</i>	<i>(50,45)</i>	<i>(80,56)</i>	<i>(131,01)</i>			
8	Želechovice		26,82	26,82	0:40	40,23	10:15
8	Pindula 1	17,22					10:18
	<i>Remote Refuel Zone Slušovice</i>	<i>(33,23)</i>	<i>(75,92)</i>	<i>(109,15)</i>		<i>4,64 km after fly finish of SS Pindula</i>	
	Remote Service (Volitelný servis Slušovice) - 6,65 km after SS Pindula						
9	Kašava		18,74	35,96	0:50	43,15	11:08
9	Podhoran 1	20,61					11:11
9A	Regrouping in		11,30	31,91	0:40	47,87	11:51
	Regrouping (Ratiboř)				0:16		
9B	Regrouping out						12:07
10	Kateřinice		4,76	4,76	0:10	28,56	12:17
10	Kateřinice 2	12,62					12:20
10A	Service in		42,31	54,93	1:10	47,08	13:30
	Service F (Zlín)	(83,68)	(179,85)	(263,53)	0:15		
10B	Service out						13:45
10C	Zlín (Street / ulice Bartošova) (Early check-in permitted)		1,67	1,67	0:10	10,02	13:55
	Prize Giving / Vyhlášení (City square / náměstí Míru)						(14:00)
10D	Zlín (City square / náměstí Míru) (Early check-in permitted)		0,35	0,35			
10E	Parc Fermé - Zlín (Next HQ / pod Velkým kinem) (Early check-in permitted)		1,43	1,43	(0:10)		

Section 4

Section 5

Section 6

Leg 2 totals	63,07	195,95	259,02
---------------------	--------------	---------------	---------------

RALLY TOTALS					
Leg Etapu	No. of SS Počet RZ	SS dist. RZ délka	Liaison dist. Trať bez RZ	Total. dist. Délka celk.	Percentage Procenta
1	6	88,48	214,97	303,45	29,16%
2	5	63,07	195,95	259,02	24,35%
Overall Totals	11	151,55	410,92	562,47	26,94%

V1 - 09.06.2025



RALLY LEGEND

LEG 1, Section 1 (Sunrise: 5:41, Sunset: 20:05) Friday 15 August 2025

SS/RZ TC/ČK	Location Místo	SS distance RZ délka	Liaison dist. Trať bez RZ	Total dist. Spoj. úsek	Target time Jízdní doba	Av. Speed Prům. rychlost	First car due Čas 1. jezdce
	Ceremonial Start - Zlín (City square / náměstí Míru)						14:00
1	Start of Leg 1 - Zlín (Vodní)						18:57
1	SSS ZLÍN (3 laps)	9,57					19:00
	Legends finish Day 1 in STOP control		-	9,57	-	-	

Section 1

LEG 1, Section 2-3 (Sunrise: 5:42, Sunset: 20:03) Saturday 16 August 2025

SS/RZ TC/ČK	Location Místo	SS distance RZ délka	Liaison dist. Trať bez RZ	Total dist. Spoj. úsek	Target time Jízdní doba	Av. Speed Prům. rychlost	First car due Čas 1. jezdce
1D	Service out (Start for Rally Legend)						11:00
	Refueling Zone	(12,73)	(31,31)	(44,04)			
2	Nové Dvory		19,26	19,26	0:40	28,89	11:40
2	Březová 1	12,73			0:40		11:43
	Remote Refuel Zone Zlín	(35,78)	(100,41)	(136,19)	12,05 km after fly finish of SS Březová		
3	Halenkovice		42,14	54,87	1:15	43,90	12:58
3	Halenkovice 1	17,67			0:45		13:01
	Remote Service (Volitelný servis Napajedla) - 4,72 km after SS Halenkovice						
4	Salaš		26,74	44,41	1:30	29,61	14:31
4	Bunč 1	18,11			0:45		14:34
4A	Regrouping & Service in		43,58	61,69	1:30	41,13	16:04
	Regrouping & Service B (Zlín)	(48,51)	(131,72)	(180,23)	0:45 (minimum 0:30)		
4B	Service out						16:49
	Refueling Zone	(12,73)	(31,31)	(44,04)			
5	Nové Dvory		19,26	19,26	0:40	28,89	17:29
5	Březová 2	12,73			0:40		17:32
	Remote Refuel Zone Zlín	(17,67)	(30,09)	(47,76)	12,05 km after fly finish of SS Březová		
6	Halenkovice		42,14	54,87	1:15	43,90	18:47
6	Halenkovice 2	17,67			0:45		18:50
6A	Prize Giving / Vyhlášení		18,48	36,15	0:50	apx.	(20:20)
	Only for Legends / jen pro Legendy (City square / náměstí Míru)						
	(Early check-in permitted / Předčasný příjezd povolen)						

Section 2

Section 3

Leg 1 totals	88,48	211,60	300,08
--------------	-------	--------	--------

RALLY TOTALS						
Leg Etapa	No. of SS Počet RZ	SS dist. RZ délka	Liaison dist. Trať bez RZ	Total dist. Délka celk.	Percentage Procenta	
1	6	88,48	211,60	300,08	29,49%	

V1 - 09.06.2025

Appendix 2

Reconnaissance schedule

Wednesday 13 August 2025

SS	Place	Stage length (km)	(from-to)
9	Podhoran	20.61	13:00 18:00
7/10	Kateřinice	12.62	12:00 17:00

Thursday 14 August 2025

3/6	Halenkovice	17.67	08:00 16:00
4	Bunč	18.11	08:00 16:00
2/5	Březová	12.73	11:00 19:00
8	Pindula	17.22	11:00 19:00
1	SSS Zlín	9.57	24:00 01:00

Times for the reconnaissance at SS1 – SSS Zlín will be given to the competitors at Administrative checks and published on the website of the rally, see Art. 9.1 SR.

Wednesday 13 August 2025 and Thursday 14 August 2025

Crews' presentation: collection of materials, reconnaissance GPS unit and optional administrative checks

Reconnaissance according to the schedule, three passes of each stage allowed.

Appendix 3

CROs – names, photographs and duties schedule

The principal duty of the CRO is to provide information or clarifications in connection with the regulations and the running of the rally to the competitors/crews. There must be at least one at each rally who must be easily identified by the competitors or crews and shall be present according of the CRO schedule. This schedule of their duties will be posted on the Official Notice Board of the rally.

Competitor's relations officer is:



Mrs. Petra MYNÁŘOVÁ (CZ, GB)
Tel.: +420 775 760 464

Schedule of CRO's duties

Friday, 15 August 2025

07:00 – 11:00 Administrative checks – Service park Zlín
 14:00 – 16:00 Ceremonial start of the rally – Zlín, Náměstí Míru square
 18:50 Start of Section 1 (Leg 1) - TC 1, Zlín, Vodní street

Saturday, 16 August 2025

10:30 – 12:00 Start of Section 2 (Leg 1) – TC 1B, next to the Velké kino
 16:00 – 17:00 Regrouping - Service park Zlín
 20:00 – 21:00 Finish of Rally Legend Demonstration Drive – Zlín, Náměstí Míru square
 20:35 – 21:30 Parc fermé - next to the Velké kino

Sunday, 17 August 2025

06:30 – 07:30 Start of Leg 2 – TC 6D, Service park Zlín
 09:15 – 10:00 Regrouping - Service park Zlín
 14:00 – 15:00 Finish of the rally – TC 10D, Zlín, Náměstí Míru square

Appendix 4

Competition numbers and advertising

The organiser reserves following places which must remain free according to this drawing:

1. Compulsory advertising

- starting numbers: Zlín, Orlen, ACCR, Zlínský kraj, Visit Czechia
- rear fenders: ONI system
- front bonnet: logo of the rally

2. Competition numbers and nameplates

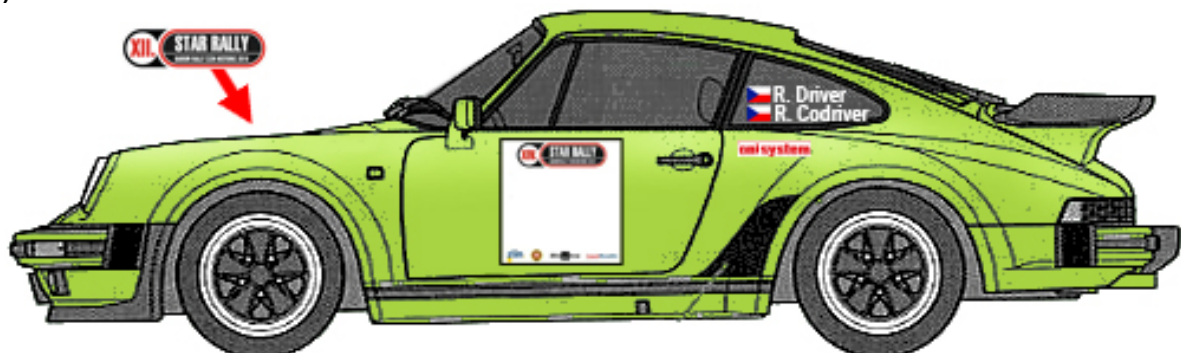
Competition numbers and will be supplied by the Organiser. Black numbers will be placed on white rectangle area (width 50 cm, height 44 cm, where area 50x30 cm is reserved for black number with height of 26 cm and remaining area 50x14cm or 2 areas 50x7cm for compulsory organiser's advertising). Letter H or L with half height of the number is an inseparable part of the starting number. Competition numbers have to be placed on the front door. Driver's and co-driver's national flag and nameplates must be placed on the rear side windows (design according to the FIA RRR) or on the front fender (min. height of the letters and flag 4 cm, letter-colour contrasting to the base color). Numbers and nameplates have to be on the car during the whole rally. If it is ascertained at any time during the rally that:

- a competition number or one rally plate is missing, this will be penalised by 100 €.
- both competition numbers or both rally plates are missing; this will be reported to the Stewards.

a)



b)



Appendix 5

MONITORING GPS SYSTEM ONI®

1. General provisions

All competition cars have to be obligatorily equipped with the ONI® tracking system. ONI® tracking system is owned by the Autoclub of the Czech Republic and will be rented to the competitors (for non-refundable fee 530 CZK or 22 EUR payable by competitor). Eventual destruction, non-return or damage of the unit has to be paid for by the competitor to the provider in accordance with the applicable price list. In case of non-returning GPS tracking system immediately after the event, the fine 842 euro will be imposed to the competitor.

2. Distribution of the ONI® tracking system

ONI® tracking system contains following parts:

- **tracking unit with display**
- **tracking unit holder**
- **power supply cable**
- **combined antenna roof**
- **control panel containing:**
 - OK button to cancel the alarm / confirm red flag
 - SOS switch for calling emergency



ONI® tracking system will be installed to every rally car before each event. Detailed information will be published no later than during road books issuing.

After arrival to the scrutineering, device administrator will install the tracking unit, antenna and control panel. Antenna and power supply cables can be purchased by the crew for personal ownership.

At the end of the rally or after retirement, the tracking unit or complete tracking system must be returned to the device administrator. Usually the devices are collected in the last Service park or before finish of the rally or in the last parc-fermé.

3. Installation of the unit in the car

3.1 To fit the tracking unit with display, antenna and control panel, it is necessary for the competitor to follow exactly the Installation guide, to keep the unit in good condition and to protect it against damage and fouling (especially the connectors) during the time.

3.2 Foreign and one time rally participants will receive a rental version of the set equipped with magnetic roof antenna. Control panel with OK button and SOS switch is in one box for which the competitor has to choose a suitable place for fitting within the reach of both crew members. It is obliged to prepare everything for its installation prior to the scrutineering.

4. The unit operation during rally

To operate the unit, the crews have to meet all instructions as mentioned in the User's guide.

Operation during events on SS:

• **Accident (crash detection)**

- The unit evaluates the situation and sends info about accident to rally control. Crew cannot affect this message.
- The display shows message: **Are you OK?** Confirm.
- 10 s after this question, the siren wails for next 15 s
- If the crew pushes **OK** button, this information is sent to rally control and information about accident is not sent to the unit of following cars in the stage.

• **Stop in SS**

- When the car stops in SS, it is counted as an obstacle. Unit signals to the crew by sound siren and text, that they have stopped. This signal takes 15 s.
- If the crew doesn't push OK, warning message is sent to the rally control and also to other cars, which are currently in the stage arriving to the obstacle.
- With pushing the OK button the crew confirms that they are okay, on the display is shown message OK and information about obstacle is not send to the unit of next cars in the stage.

• **Request for help**

- Changing the switch is confirmed by SOS message on display, also the siren sounds.

- The siren sound can be cancelled by pushing OK button.

• **Red flag**

- When the rally control hangs out the red flag, the display shows big message RED FLAG (with red background) and the siren sounds.
- Crew has obligation to confirm receiving the red flag by pushing the OK button and to reduce the speed according to the sporting regulations.
- The siren sound can be cancelled by pushing OK button.
- The red flag on display can be cancelled only by rally control.

5. Speed checking during reconnaissance

During reconnaissance the crew is obliged to follow traffic rules of the Czech Republic. Not respecting this rules, especially exceeding the speed limits, will be monitored via ONI® tracking system. This checking doesn't exclude other checks, i.e. police controls according to their standard procedures.

ONI® tracking system for reconnaissance

Tracking system is checking the speed in every moment during the reconnaissance.

Every crew will pick up the ONI® recce tracking unit together with roadbook. Installation of the unit and its using during reconnaissance is obligatory for all crews during the whole schedule of reconnaissance according to the art. 3 Reconnaissance schedule. For speed checking during the reconnaissance, NCL 21 units are used.



NCL21 unit is started during roadbook issuing before starting of reconnaissance. For whole reconnaissance the unit is working on its own battery. It is not necessary to plug the unit to any power supply.

It is possible to place the unit on metal surfaces - magnets are implemented in the unit.

Not using the unit in a rally car during reconnaissance will be fined.

Every attempt to falsify, manipulate or infringe the unit for reconnaissance or any device, which will make impossible to collect data because of external interference will be reported to the stewards who can penalize the crew up to refusing the start.

Decision regarding seriousness of the offence and its repeating is in Clerk of the Course's authority. For exceeding the speed limit, sanctions can be given according to supplementary regulations or championship regulations.

6. Manuals and other information: www.onisystem.cz/rally